

# the wythall directory

december 2024

a community magazine and business directory  
for residents of wythall & hollywood

## HOLLYWOOD PHARMACY

### Unbeatable Fragrance Prices

#### PRADA PARADOXE



30ml EDPS REFILLABLE  
**SAVE: £9.05**  
RRP: £69.00  
**£59.95**

90ml EDPS REFILLABLE  
**SAVE: £35.05**  
RRP: £135.00  
**£99.95**

#### ALIEN



30ml EDPS REFILLABLE  
**SAVE: £10.05**  
RRP: £70.00  
**£59.95**

90ml EDPS REFILLABLE  
**SAVE: £34.05**  
RRP: £134.00  
**£99.95**

#### MARC JACOBS DAISY WILD

**NEW**

30ml EDPS  
**SAVE: £10.05** **£49.95**  
RRP: £60.00

100ml EDPS  
**SAVE: £25.05** **£89.95**  
RRP: £115.00

#### MONT BLANC EXPLORER



30ml EDPS  
**SAVE: £13.05**  
RRP: £38.00  
**£24.95**

100ml EDPS  
**SAVE: £27.05**  
RRP: £82.00  
**£54.95**

#### JEAN PAUL GAULTIER LE MALE 75ML 3PC GIFT SET



**SAVE: £23.86**  
VALUE: £78.81  
**£54.95**

• 75ml EDTS • 75ml Shower Gel

#### BOSS BOTTLED



30ml EDTS  
**SAVE: £17.05**  
RRP: £47.00  
**£29.95**

50ml EDTS  
**SAVE: £19.05**  
RRP: £59.00  
**£39.95**

#### JIMMY CHOO



40ml EDPS  
**SAVE: £42.05**  
RRP: £68.00  
**£25.95**

100ml EDPS  
**SAVE: £49.00**  
RRP: £94.00  
**£45.00**



## SCAN FOR MORE FRAGRANCES

🏠 Hollywood Pharmacy | 59 May Lane | Hollywood | Birmingham | B47 5PA

📱 /hollywoodpharmacy

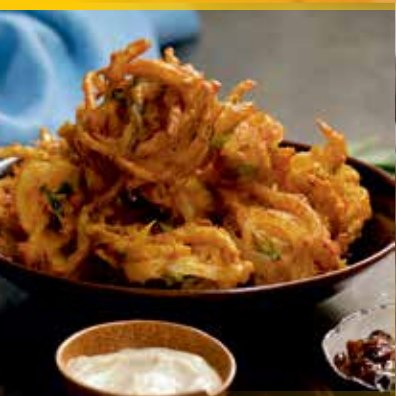
📺 /hollywoodpharmacy

📺 /hollywoodPharm1





MONSOON  
**20**  
YEARS  
2003-2023



**OFFER:  
MONDAY &  
TUESDAY**

**ANY STARTER  
ANY MAIN DISH\*  
ANY NAN OR RICE  
& COFFEE\*\***

**£16.00PP**

\*(Fish, Lamb Shank  
& King Prawns  
£4 extra per dish)  
\*\* (Plain Coffee)



# Hollywood Golf Club

Hollywood Lane, Birmingham B47 5PP

## **FREE Function Room Hire**

**Have you got an event you want  
to celebrate in 2025?**

**Book Now – no deposit required**

**Catering buffets from**

**£9.50 pp**



**This may be just the  
venue you are looking for!**

Exclusive private hire room perfect for your event. Capacity up to 120 with the option to reduce size for a more intimate space.

Dance floor, private licensed bar, on site catering, patio area with beautiful views across the course & private secure parking. Meeting room hire is also available. Call Debbie 0121 430 8544 Option 1 for full details and availability.

# Merry Christmas

Welcome to the December edition

**Wishing you all a very merry Christmas.**

**Christmas will be just around the corner by the time this reaches you. So here's hoping you're all stocked up with goodies and gifts to see you through the festive season.**

It can be the most wonderful time of the year, but it can also be the loneliest. If you have time why not try reaching out to any local people who live on their own to see if they'd like a cup of tea and a chat. However you spend your Christmas, here's hoping you have a lovely time and wishing you all a happy and healthy 2025.



Zoe Reece

Tel: 07557 220585

Email: [zoe@dorridgedirectory.com](mailto:zoe@dorridgedirectory.com)

[www.wythalldirectory.com](http://www.wythalldirectory.com)



**ADVERTISE  
HERE**

**Advertise**

Contact Zoe Reece on 07557 220585 /  
[zoe@dorridgedirectory.com](mailto:zoe@dorridgedirectory.com)

**Locally designed by:** hotlobster design ltd **Printed by:** Norwood Press

**PLEASE RECYCLE THIS MAGAZINE**



# AND SO TO BED

LONDON

**EXCLUSIVE OFFER**  
**TWO FREE LUXURY PILLOWS WITH**  
**ANY MATTRESS PURCHASE IN STORE\***

## SOLIHULL SHOWROOM

**BOOK YOUR SLEEP  
EXPERT CONSULTATION:**



**VISIT US AT:**

441 STRATFORD ROAD SHIRLEY  
SOLIHULL WARWICKSHIRE B90 4AA

Free parking at the front  
of the showroom.

**OPENING HOURS:**

MON-SAT 9.30-17.30

SUN 10.30-16.30

**EMAIL:**

[solihull@andsotobed.com](mailto:solihull@andsotobed.com)

**AIRELOOM.**  
CALIFORNIA DESIGN - HANDMADE

**VISPRING**  
Luxury Beds - London 1901

**TEMPUR**

**ANDSOTOBED.CO.UK | 0121 392 2505**

\*PLEASE MENTION THIS ADVERTISEMENT IN STORE TO REDEEM

# community events



## Santa's Christmas Cracker

**20-24 December, The Core Theatre Solihull**

Father Christmas is busy making toys, Dotty the Elf is decorating the Christmas tree and Dasher the Reindeer is getting presents onto his sleigh - but then they meet a lost penguin who has never even heard of Christmas... This 45-minute family show is particularly suitable for 2-7 year olds and afterwards each child gets to meet Father Christmas and receive a specially wrapped present. For tickets please visit [www.thecoretheatresolihull.co.uk](http://www.thecoretheatresolihull.co.uk)



## Back to the '60's Party Night

**10 January, Nailcote Hall**

Join in for a night of fun, flair, and funky beats as they transport you back to the

fabulous 1960s with DJ Franco. Dust off your bell-bottom and put on your platform shoes for an evening filled with dancing, laughter, and nostalgia. Their Party Nights include a three-course dinner and DJ. For tickets visit [www.nailcotehall.co.uk](http://www.nailcotehall.co.uk)

## Young Voices

**13 - 17 and 29-31 January and more, bp pulse LIVE (formerly Resorts World Arena)**

For over 29 years, Young Voices has been at the forefront in delivering an extraordinary concert experience for primary school children and this is why it isn't just any children's choir concert; it's the largest children's choir concerts in the world! More info: [www.bppulselive.co.uk/whats-on/young-voices](http://www.bppulselive.co.uk/whats-on/young-voices)

## Bee Gees Tribute Night

**15 February, Shirley British Legion**

Prepare for a night of nostalgia and timeless tunes as they pay homage to the iconic Bee Gees with their Bee Gees Tribute Night. Join in the fun at Shirley British Legion for an unforgettable evening celebrating the music and legacy of one of the greatest bands in history. Tickets from [www.ticketsource.co.uk](http://www.ticketsource.co.uk)

▶ **VEHICLE GRAPHICS**  
▶ **DIGITAL PRINTING**  
▶ **SIGNS**

For more information please contact us on the below



**Baker  
Ward Ltd**

**Tel: 01564 822 465**

[www.bakerward.co.uk](http://www.bakerward.co.uk)

[sales@bakerward.co.uk](mailto:sales@bakerward.co.uk)

The Hampton Works, Alcester Road,  
Hollywood, West Midlands B47 5HE



**Mark O'Sullivan**

**HOLLYWOOD CHIROPODY  
PODIATRIST**

**Hollywood Medical Practice**

Beaudesert Rd, Hollywood, Birmingham, B47 5DP

For clinics and Home Visits call:

**07824506839**

[mark@hollywoodchiroprady.co.uk](mailto:mark@hollywoodchiroprady.co.uk)

[www.hollywoodchiroprady.co.uk](http://www.hollywoodchiroprady.co.uk)







# JJ'S BARBERS

## CHRISTMAS AT JJ'S BARBERS

COME AND JOIN US FOR A COMPLIMENTARY  
MULLED MINE, SQUASH, OR CUP OF TEA,  
IN A WARM AND FRIENDLY ATMOSPHERE.

---

OVER 15 YEARS EXPERIENCE IN ALL MALE HAIRCUTS  
ALSO SPECIALISING IN ALL AGES OF ADDITIONAL NEEDS. ALL AGES WELCOME.

**TEL: 07778 315 579**

CASH AND CARD ACCEPTED

---

### ★ CHRISTMAS OPENING HOURS ★

ALL MONDAYS IN DECEMBER WILL BE OPEN FROM 9.30-4.00PM

WEDNESDAY 18TH DEC - 10.00-6.00PM

THURSDAY 19TH DEC - 9.30-5.30PM

FRIDAY 20TH DEC - 9.30-9.30PM

SATURDAY 21ST DEC - 9.30-6.00PM

MONDAY 23RD DEC - 10.00-4.00PM

TUESDAY 24TH DEC - 10.00-4.00PM

XMAS EVE - APPOINTMENTS ONLY PLEASE CALL

SATURDAY 28TH DEC - 10.00-4.00

---

BACK OPEN JANUARY 6TH 2025

309A ALCESTER ROAD, WYTHALL B47 5HJ (NEXT TO THE WHITE SWAN PUB CAR PARK)

---





# CHRISTMAS TREECYCLING

By Birmingham Hospice

— 11 and 12 January 2025 —

Take the hassle out of disposing of your Christmas tree. Book to have it collected and recycled by your local hospice.



Scan to book

Book today at [birminghamhospice.org.uk/treecycling](http://birminghamhospice.org.uk/treecycling) or call 0121 465 2009

In partnership with:



Operating partners:



A fully insured and highly skilled roofing company based in Solihull, West Midlands with many years experience. Deluxe Roofing Ltd is a professional, reliable roofing company with unrivalled expertise in the industry.

- New Roofs • Flat Roofs • Minor Repairs • Fascias and Guttering
- Insurance Work • Moss Removal • Rebedding of Ridge Tiles • Chimneys
- Valleys • All Guttering Cleaned and Repaired **from £49.99**

**OFFICE: 0121 314 99 53 FREEPHONE: 0800 747 14 61**

MIDLANDS BRANCH  
UNIT 70, 123 STRATFORD ROAD, SHIRLEY. B90 3ND

[WWW.DELUXEROOFINGLTD.CO.UK](http://WWW.DELUXEROOFINGLTD.CO.UK)



## STU'S LOFT LADDERS

**FREE**  
No Obligation Quote  
10 year Manufacturer Warranty

### Installing Loft Ladders Since 2008

#### All types of loft ladders professionally installed.

Top quality 3 section aluminium loft ladder professionally fitted with pivot arm, hand rail, wide flat treads for comfort and rubber feet. Loft hatch included.



### We also install loft flooring and boarding

#### Areas that we cover?

- Redditch • Solihull • Stratford-Upon-Avon
- Worcester • Warwick • Birmingham • Evesham

Tel: 01527 850295 • Mobile: 07712 327889  
stuart@stusloftladders.co.uk • www.stusloftladders.co.uk

# JL Plumbing & Heating

James Long | jameslongplumbing@gmail.com | 07972 214981

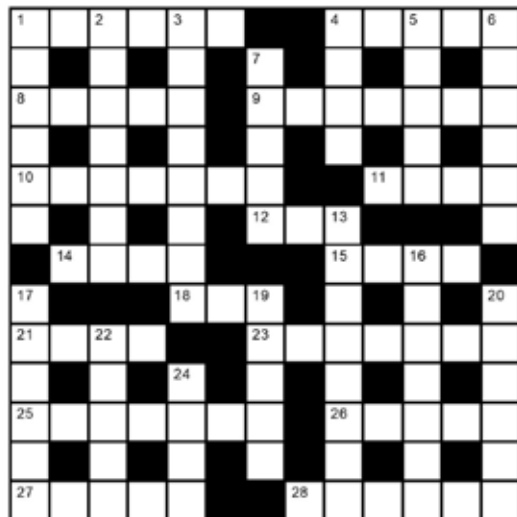
## All Aspects of Plumbing & Heating Undertaken

- ◆ Toilet Repairs
- ◆ Radiator Removal
- ◆ Bathroom Installations
- ◆ Boiler & Full Central Heating Installation
- ◆ Underfloor Heating
- ◆ Air Source Heat Pumps
- ◆ And Much More...

15 Years City & Guilds Experience  
No Job Too Small  
Call Out 24 Hours a Day



## crossword



## clues

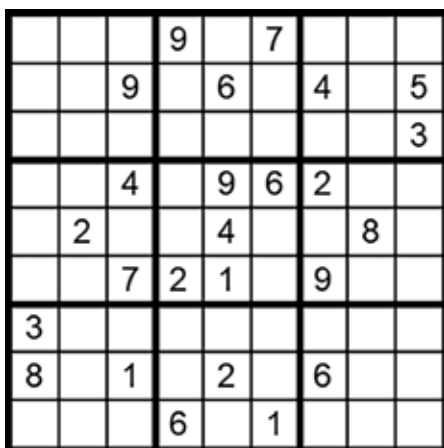
### Across

- 1 Contribute, give (6)
- 4 Demise, end (5)
- 8 Jeopardy (5)
- 9 Sank the Titanic (7)
- 10 Distinctly (7)
- 11 Indian dress (4)
- 12 Deceive (3)
- 14 Sung in church (4)
- 15 Reveal, display (4)
- 18 Fasten, attach (3)
- 21 Idol, venerated image (4)
- 23 Wander aimlessly (7)
- 25 Gift (7)
- 26 Modify (5)
- 27 Appoint, nominate (5)
- 28 Affluence, riches (6)

### Down

- 1 Portray, illustrate (6)
- 2 Baby's room (7)
- 3 Forgiving, lenient (8)
- 4 Means of losing weight (4)
- 5 Stadium, amphitheatre (5)
- 6 Scottish meat pudding (6)
- 7 Resin used to make gramophone records (5)
- 13 Heighten, intensify (8)
- 16 Weirdo, eccentric (7)
- 17 Small alcoholic drink (6)
- 19 Barren, deserted (5)
- 20 Walking aid (6)
- 22 Very overweight (5)
- 24 Loaned (4)

answer on page 18



## how to play sudoku

### It's simple!

Fill in the grid so that each row, column and 3x3 box, contains the numbers 1 through to 9 with no repetition. You don't need to be a genius. These puzzles use logic alone. Watch out! Sudoku is highly addictive.

answer on page 18



# a good read By Natasha Donovan

## A Cornish Christmas Murder

by **Fiona Leitch**

A Cornish Christmas Murder is a delightful seasonal mystery that transports readers to the cozy, scenic village of Penstowan. In this latest instalment of the Jodie Parker Mystery series, we find the former detective turned amateur sleuth, Jodie "Nosey" Parker, knee-deep in yuletide festivities, only to have the holiday spirit interrupted by a gruesome murder. The novel begins with Jodie hoping for a quiet Christmas with her family, but things take an unexpected turn when a high-profile celebrity chef is found dead at the local holiday festival. With the charming Cornish landscape covered in snow, the idyllic setting makes for a perfect contrast to the sinister crime that unfolds. As Jodie steps in to help the local police unravel the mystery, readers are treated to an engaging plot full of twists, red herrings, and quirky village characters. Leitch's storytelling is full of warmth and humour. This is not a novel for lovers of gruesome gritty city crime set in the real world. Here the cozy atmosphere, mixed with an array of delicious Christmas treats, makes for a festive, page-turning experience. Jodie's wit and determination make her an endearing protagonist who feels like an old friend, and her dynamic with the colourful cast brings the village to life. A Cornish Christmas Murder is a satisfying blend of mystery and holiday charm, perfect for readers to curl up with during the festive season. Just add a roaring fire and a glass of mulled wine.



## The Miracle on Ebenezer Street

by **Catherine Doyle**

This heartwarming and enchanting children's novel reimagines the spirit of Christmas in a way that will captivate readers young and old. Inspired by Charles Dickens' A Christmas Carol, the hero of the story is 9-year-old George, whose life is overshadowed by sadness since his mother dies. Three years later, George's father has lost all enthusiasm for Christmas, banning any festive celebrations in their home. However, everything changes when George stumbles upon a mysterious Christmas shop and discovers a magical snow globe. This seemingly ordinary item transports George, his father, and his mischievous grandmother on an extraordinary adventure through time and alternate versions of Christmases past, present, and what might be in the future. Each stop on their journey reveals a little more magic, hope, the possibility of healing and rediscovery of joy. Doyle's storytelling is woven with vivid imagery, humour, and emotion, making it a real holiday treat. The characters are relatable and full of warmth, especially George, whose longing for Christmas captures the spirit of the season. Doyle blends themes of grief, love, and the importance of family into a story full of whimsy and wonder. This is a delightful and touching read that will become a much-loved Christmas classic. A great stocking-filler.



# Goods

## Carpets & Flooring Ltd

Local Family Business. **Established 1939**

- Carpets
- Cushioned Vinyls
- Safety Flooring
- Contract & Domestic
- Tiles
- Karndean

We offer uplifting and disposal of old carpets  
moving furniture and easing of doors!

All our fitters are employed & we are NICF Retailer Members



**OPEN**

Mon to Fri 8.30 - 5pm

Saturday 9.00 - 2.00pm

812 Alcester Road South, Birmingham B14 5HH

**Tel: 0121 430 5289**

FREE ESTIMATES AND SAMPLES SERVICE

# Christmas Gifts with a twist

With Christmas approaching, finding the perfect gift can be a challenge, especially when you want to avoid the ubiquitous bubble bath and socks. Here are some unusual but meaningful Christmas gift ideas that are sure to delight and surprise your loved ones this holiday season.

## Personalized Star Maps -

These maps show the exact alignment of the stars on a significant date in the recipient's life, whether it's their birthday, an anniversary, or another special occasion. Star maps make for stunning wall art but also carry deep sentimental value. They serve as a reminder of a cherished moment, making them both thoughtful and unique.

**Experience Gifts** - Experience-based gifts have become increasingly popular as most of us concede we own too much 'stuff.' They can be tailored to the recipient's interests, whether they're adventure seekers or food lovers. For someone who values experiences over material possessions, this type of gift shows that you've thought carefully about what would make them happiest, whether that's a cooking class, hot air balloon ride, or a wine tasting tour.

**Subscription Boxes** - For a gift that keeps giving beyond



Christmas Day these curated boxes can cater to all kinds of hobbies and tastes. Whether your recipient enjoys gourmet snacks, skincare products, books, or gardening, there's a subscription service for them. Subscription boxes add an element of surprise, as the recipient gets to enjoy their gift over time, reminding them of you with each delivery.

**Charity Donations in Their Name** - For those who value giving back, consider making a charitable donation in their name. This gift is both thoughtful and impactful, as it helps a cause that's meaningful to them. Many organizations offer the option to send a personalized card or certificate, informing the recipient of the donation. Whether it's supporting animal welfare, environmental initiatives, or community projects, this is a great way to make a difference while honouring someone's values.

**Customized Art Pieces** - This could be anything from a hand-drawn portrait of their pet, a

family illustration, or a map of their favourite city. With many artists offering bespoke services online, you can find a style that perfectly suits the recipient's taste. This kind of art is not only beautiful but also deeply personal, ensuring it will be a cherished keepsake for years to come.

**DIY Gift Kits** - These allow the recipient to make something themselves. These kits come in a variety of options, from making candles or soap to brewing their own beer or planting a mini herb garden. DIY kits are interactive, engaging, and give the recipient a sense of accomplishment. Plus, they can enjoy the finished product long after the holidays have passed.

Finding a gift that's both unusual and thoughtful doesn't have to be difficult. The key is to select something that reflects the recipient's personality and interests. These gift ideas go beyond the ordinary, offering a unique way to show your loved ones how much you care this Christmas.



# DENTURE CLINIC BIRMINGHAM

New Cosmetic Dentures  
FREE CONSULTATION

Tel: 01564 703623 or M: 07516 729256

Denture  
Repairs  
while  
you  
wait



The Old Surgery, 14 Cole Bank Road  
Hall Green, Birmingham B28 8EX  
M Evans GDC NO: 125164

## BOOK YOUR ROOF & GUTTER CLEANING NOW!

Our Cleaning Services:

- ✓ ROOFS
- ✓ CUTTERS INSIDE & OUT
- ✓ FASCIAS & SOFFITS
- ✓ DRIVEWAYS
- ✓ PATIOS
- ✓ MOSS REMOVAL
- ✓ STONEMWORK
- ✓ RENDER & CLADDING

CALL NOW FOR A FREE QUOTE



0121 369 0070 | 07546 264164



✉ enquiries@solclean.co.uk 🌐 www.solclean.co.uk

## Surviving Christmas!

### Tips for managing 'trickier' guests this festive season.

Whether its Uncle Gary, who prides himself on his radical honesty, or Auntie Sally who makes passive aggressive digs at your cooking, handling poorly behaved relatives at Christmas is challenging. It's helpful to have a few strategies in your back pocket so you can navigate the festive season without strangling anyone.

#### Set Boundaries Early -

Before the event set clear boundaries with relatives who may be troublesome.

Politely express your desire for a peaceful holiday and outline any behaviours that might disrupt this. For example, let them know you'd prefer to avoid controversial topics like politics or conspiracy theories at the dinner table.

#### Redirect the Conversation

- If things start to veer into uncomfortable territory, try steering the conversation towards safer, light-hearted topics. Ask about holiday plans, recent hobbies, or festive film recommendations. Anything to keep the mood light and avoid potential landmines.

**Stay Positive** - Focus on



the enjoyable parts of the gathering and people who make you feel happy and relaxed. Sometimes laughter really is the best medicine, and a little holiday cheer can go a long way in smoothing out those tricky family moments. And if all else fails, tell yourself it's just one day, and next year you can always 'forget' to invite them!

# Winter-Spiced Hot Chocolate

You will be the hit of the festive season with this chai-inspired twist on a winter favourite.



**Preparation time:** 10 mins

**Cooking time:** 10 minutes

**Serves:** 2

## Ingredients

### Spice Hot Chocolate

2 cups milk (full fat or semi-skimmed work well, but you can experiment with soy, oat etc)  
 4 tablespoons high quality drinking chocolate  
 2 cinnamon sticks  
 2 star anise  
 6 cloves  
 6 green cardamom pods  
 ½ teaspoon nutmeg  
 freshly grated

### Cardamom and Vanilla Whipped Cream

½ cup whipping cream  
 ½ teaspoon ground cardamom

2 teaspoons vanilla extract  
 3 teaspoons sugar optional (if you don't have a sweet tooth, leave this out)

## Method

### Spiced Hot Chocolate

Place the milk and all of the whole spices into a small, heavy-bottomed saucepan and bring to a simmer (don't let it boil). Allow to simmer for about 3 minutes, whisking or stirring gently to stop the milk being scorched. Mix the drinking chocolate with a small amount of cold milk to make a runny paste and add this to the milk in the pan, stirring all the time.

Simmer the hot chocolate for a few minutes, whisking or stirring occasionally. Strain into mugs (to catch the whole spices). Top with the cardamom and vanilla whipped cream.

### Cardamom and Vanilla Whipped Cream

Chill a mixing bowl for 30 minutes. Then into the bowl, combine the whipping cream, sugar (if using), vanilla and cardamom. Whip the mixture, until you get soft peaks, a light and airy topping. When whipping aim for soft clouds of cream. Stop before the cream gets too thick.

Does your company  
need a **fresh approach**  
to marketing?



**hotlobster design** offers everything a  
business needs in this **digital world**.

Bespoke content managed websites, SEO, social media management,  
print management, logo design, clothing, copy writing and much more.

hotlobster   
design • marketing • web • print

**0121 369 1977**  
[www.hotlobster.uk.com](http://www.hotlobster.uk.com)



# ADVERTISE HERE

Advertise

Contact Zoe Reece on 07557 220585 /  
zoe@dorridgedirectory.com

### WYTHALL PARISH COUNCIL

01564 823149

### WYTHALL COMMUNITY ASSOCIATION

01564 823 281

office@wythall-park.org.uk

## local police contact for wythall & hollywood

Telephone: 101

### Health

NHS non-emergency	111
Wythall Lane Surgery	0121 628 2345
Hollywood Medical Practice	01564 822642
Hollyoaks Medical Centre	01564 823182

### Council

Bromsgrove District Council (main switchboard)	01527 881288
Bromsgrove District Council (emergency out of hours)	01527 871565

### Utilities

Electricity power cut	105
Gas leak	0800 111 9999
Severn Trent Water (supply & emergencies)	0800 783 4444

### Travel

National Rail Enquiries	03457 48 49 50
First Bus Worcestershire	0345 646 0707

4	1	5	9	3	7	8	6	2
7	3	9	8	6	2	4	1	5
2	6	8	1	5	4	7	9	3
1	8	4	3	9	6	2	5	7
9	2	3	7	4	5	1	8	6
6	5	7	2	1	8	9	3	4
3	7	6	4	8	9	5	2	1
8	4	1	5	2	3	6	7	9
5	9	2	6	7	1	3	4	8

### Sudoku Solution

from page 11

D	O	N	A	T	E		D	E	A	T	H		
E	U	O	V			J	R	A					
P	E	R	I	L		I	C	E	B	E	R	G	
I	S	E	N	T		N	G						
C	L	E	A	R	L		S	A	R	I			
T	R	A	L	L	I	E					S		
T	H	Y	M	N		S	H	O	W				
T			T	I	E		C	D			C		
I	C	O	N			M	E	A	N	D	E	R	
P	B	L	P	L	B							U	
P	R	E	S	E	N	T		A	D	A	P	T	
L	S	N			Y			T	L			C	
E	L	E	C	T				W	E	A	L	T	H

### Crossword Solution

from page 11

## ADVERTISE IN THIS PUBLICATION

# DON'T MISS OUT!

Contact Zoe Reece  
on 07557 220585 /  
zoe@dorridgedirectory.com



# Rightio Plumbing & Heating

0121 206 3761

We work in  
**Wythall, Hollywood,  
Headley Heath, Druids  
Heath and all  
surrounding areas**

**▶ COMPETITIVE RATES ◀**

- ✓ Fast Response
- ✓ All Work Guaranteed
- ✓ Flexible Appointment Times

**▶ 12 Month ◀**

Guarantee  
on labour!

Excludes blockages

**▶ OAP ◀**

**Discount**  
Speak to  
us today!

**▶ 1-2 Hour ◀**

Emergency  
Response  
time!



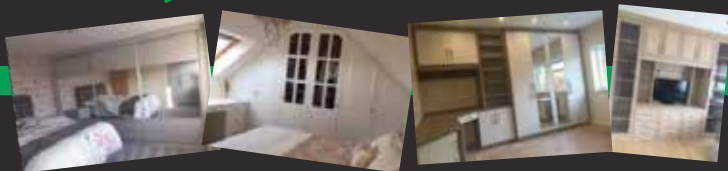
650921

**OUR SERVICES**

- ✓ Boiler Breakdowns
- ✓ Boiler Servicing
- ✓ Radiators & Pipes
- ✓ Tanks & Cylinders
- ✓ Toilets & Taps
- ✓ Leaks & Bursts
- ✓ Showers
- ✓ Clearing Blockages
- ✓ Pipework Replacement
- ✓ Gas Safe Certified

creating beautiful storage solutions

## Hollywood Bedrooms



**fitted wardrobes • home office • bespoke furniture**

- Contemporary or traditional.
- Hinges or sliding.
- All made to measure.
- Sloping ceilings and awkward shaped rooms.
- Quality furniture fitted to the highest standard for over 25 years.

Call Neil  
**07861 64 50 54**

[www.hollywoodbedrooms.co.uk](http://www.hollywoodbedrooms.co.uk)



We are  
a local  
business  
supporting  
**Wythall &  
Hollywood.**

- Approved suppliers of Ultion and Apecs 3 Star **anti snap locks**
- Repair/Supply and fit of **windows and doors** – Certass Approved
- Misted Glass replacement
- Repair/Supply and fit of all types of **Garage doors**
- **Key cutting** including **high security**

**Call for a free quote or advice**

0121 663 6277 | 07368 508936  
[www.homesecurestore.co.uk](http://www.homesecurestore.co.uk)

**1835 Pershore Road, Cotteridge, Birmingham, B30 3DJ**



myBuilder.com



Checkatrade.com  
Where reputation matters

CERTASS  
Registered Installer



GLIDEROL  
garage doors



ULTION  
KEY CONTROL